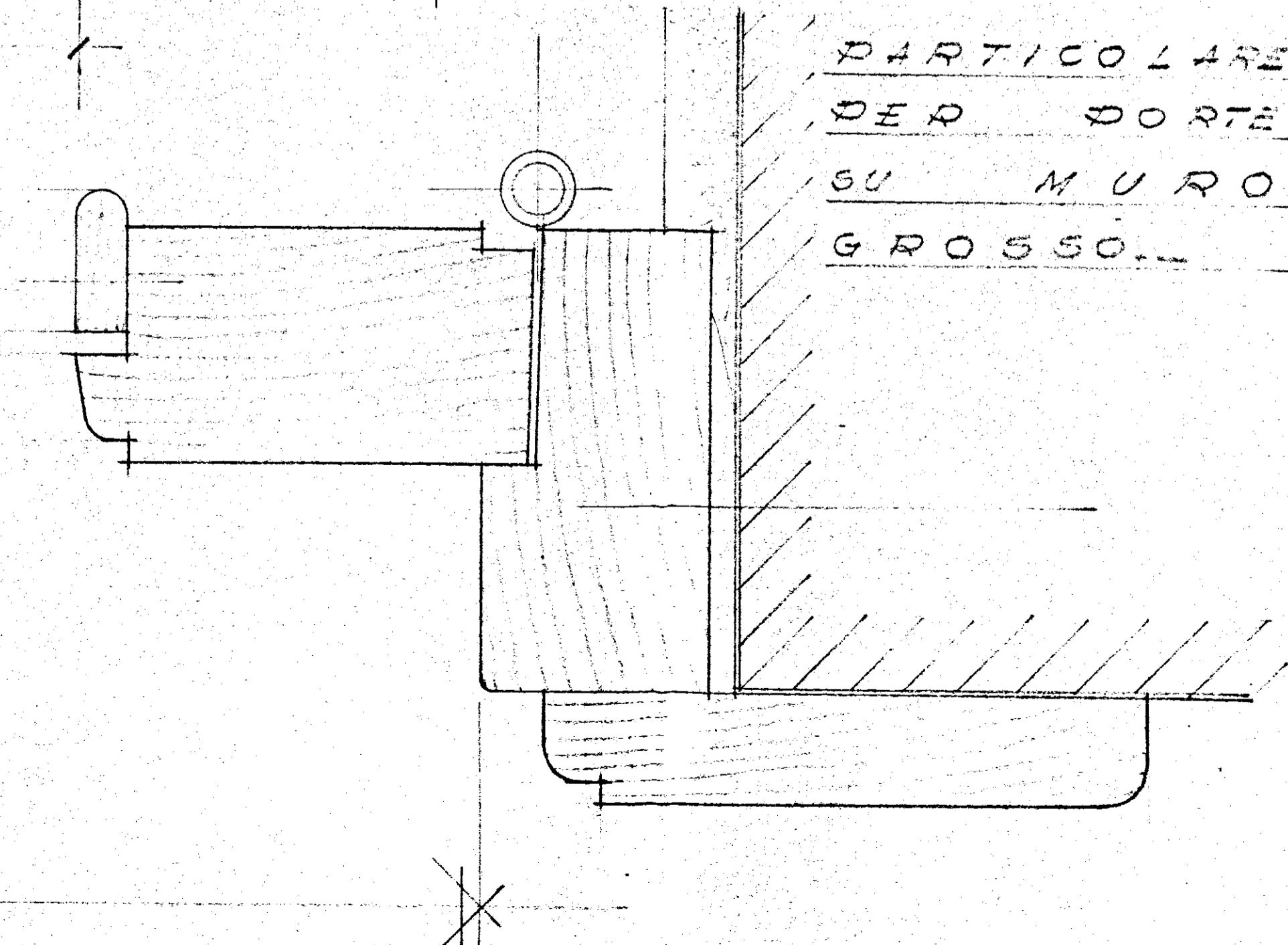
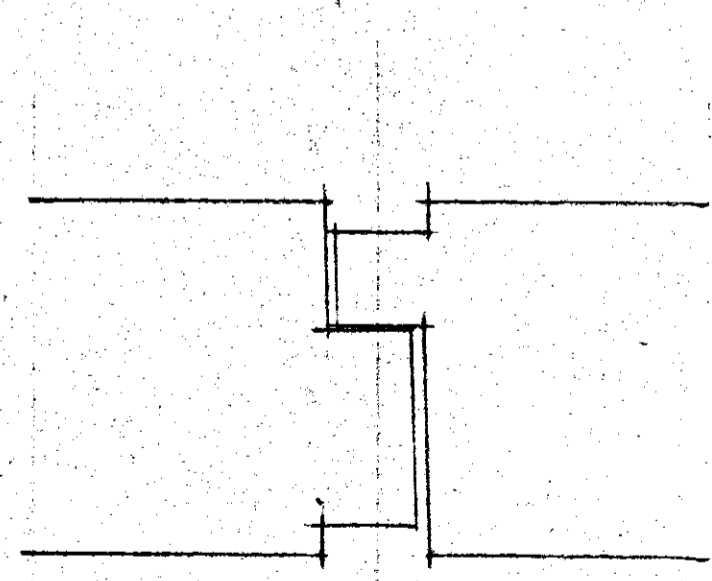
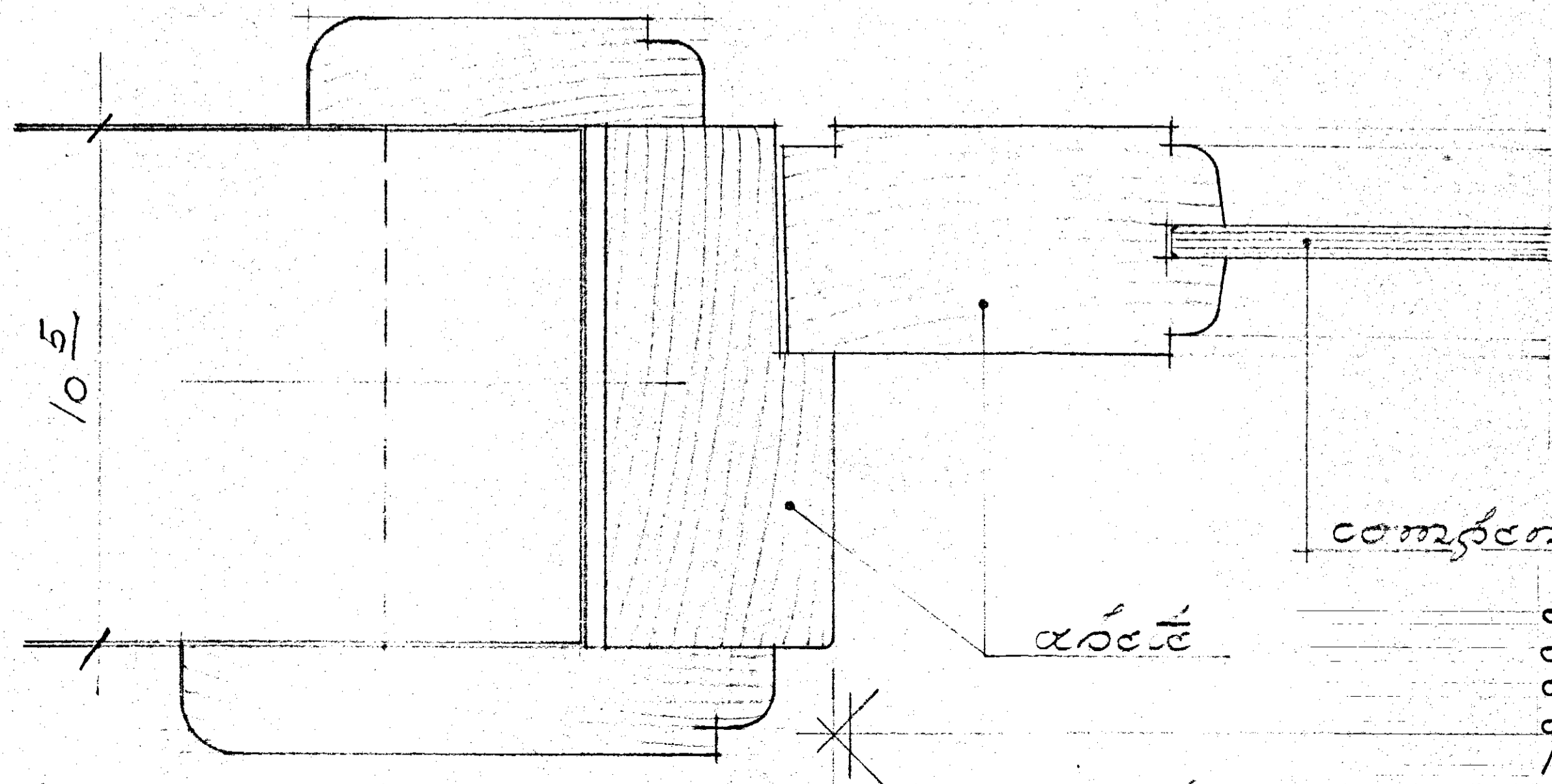
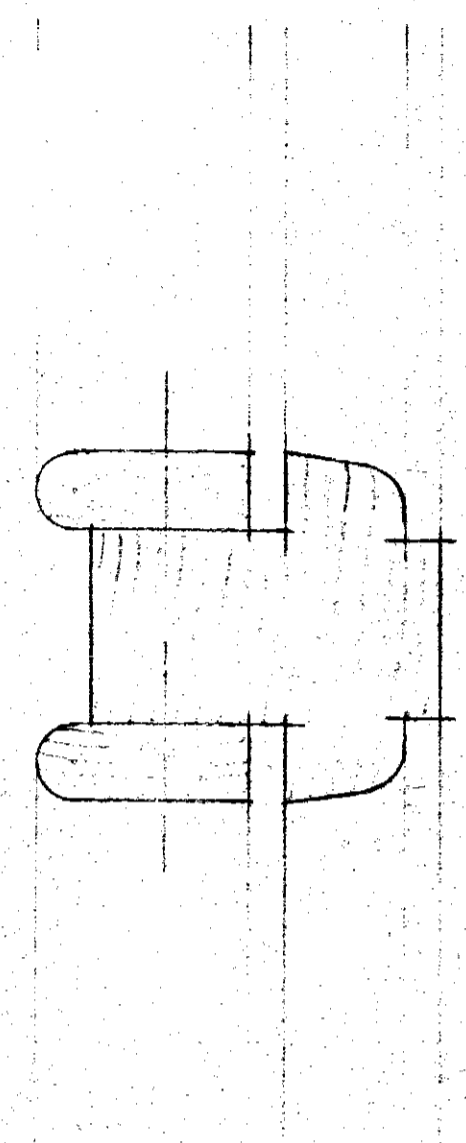
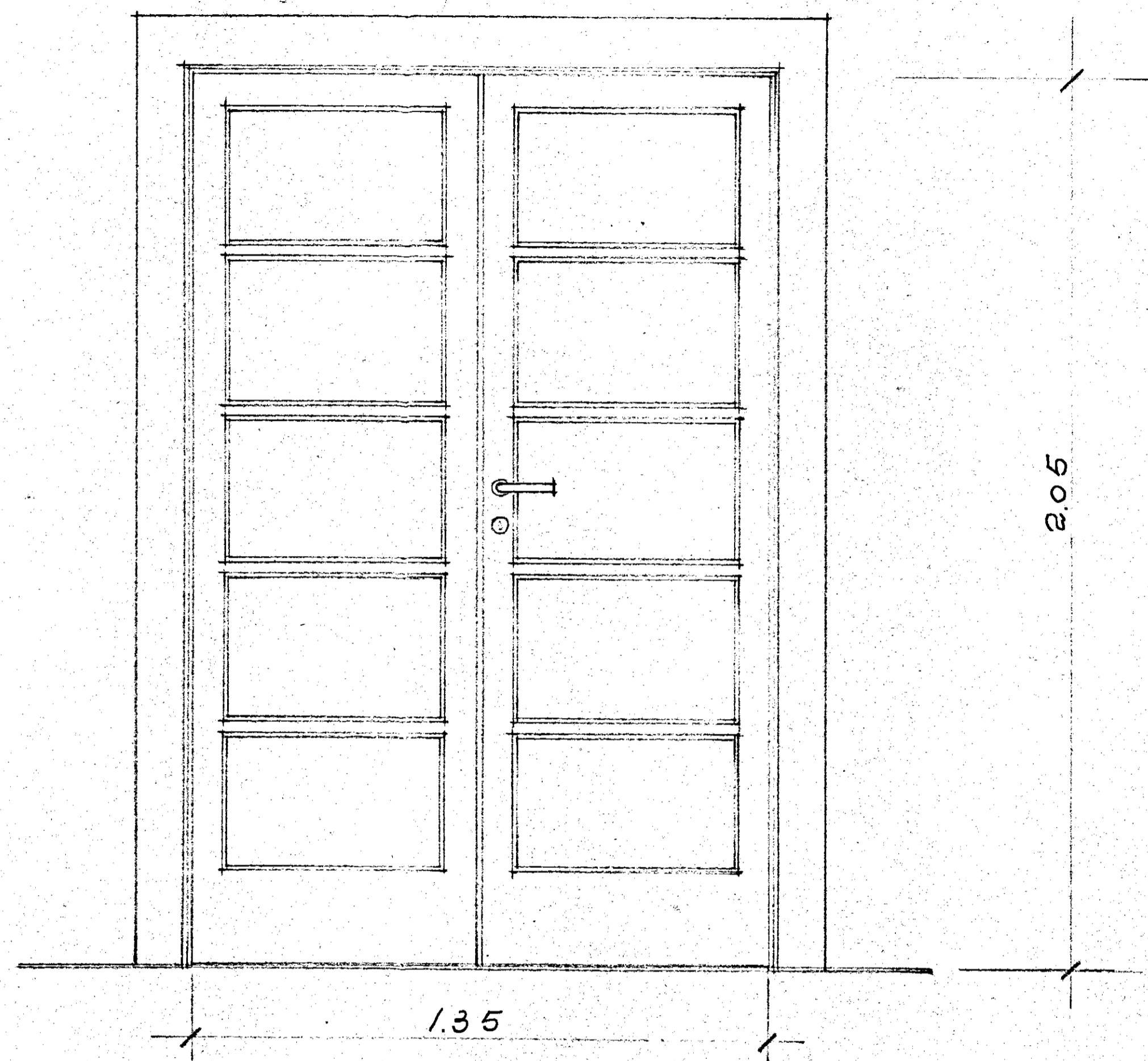
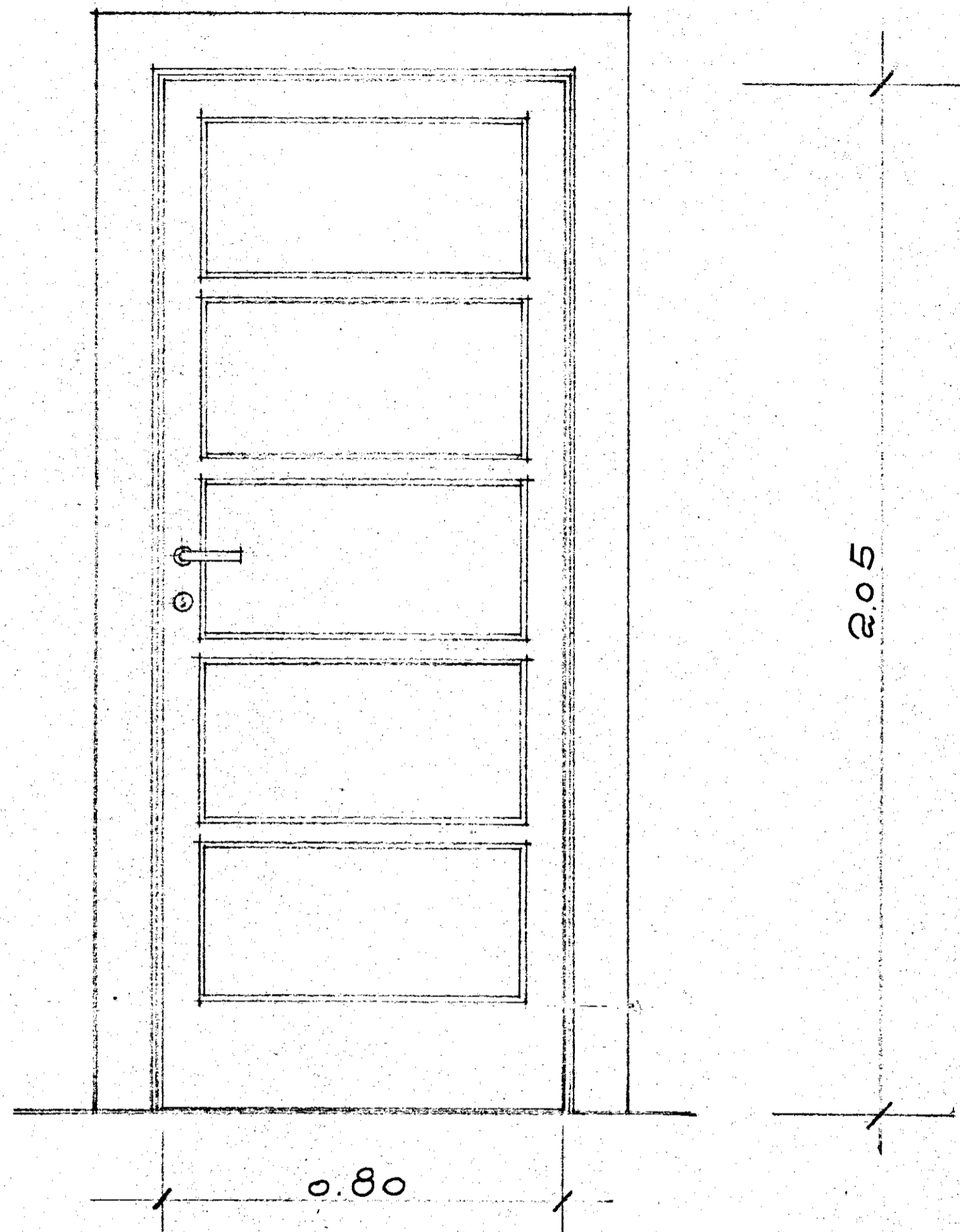
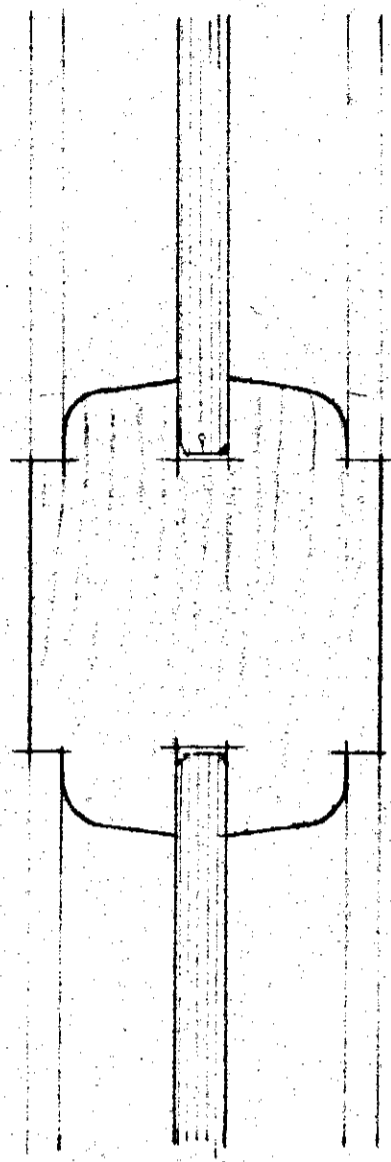


"D" 4 CIECA O CON PANNELLO
SUPERIORE A VETRI

"D" 5 " CON TUTTI I PANNELLI A VETRI



compensato m 6

alce

- 0.80 x 2.05
- 0.70 x 2.05
- 0.70 x 2.00 (cantine)
- 0.60 x 2.05
- 1.35 x 2.05 (a e batt.)