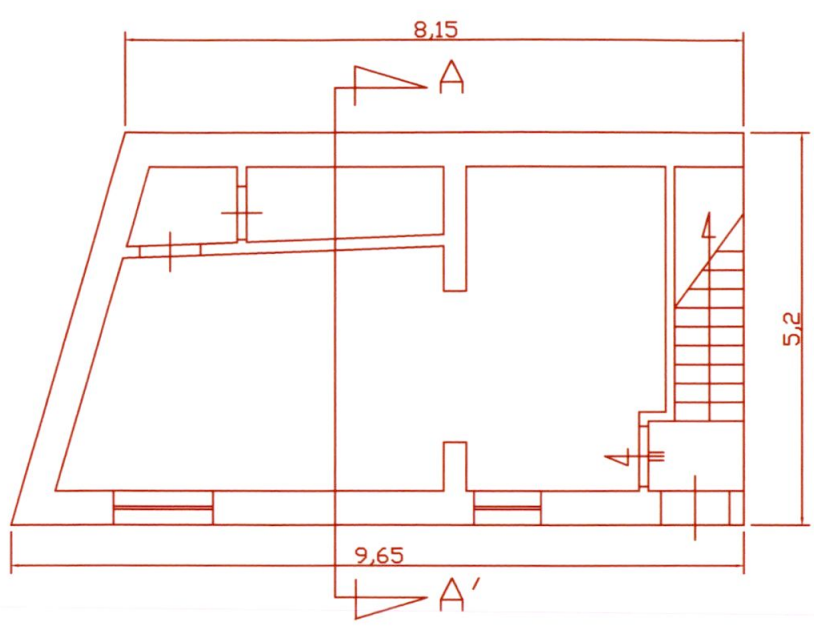
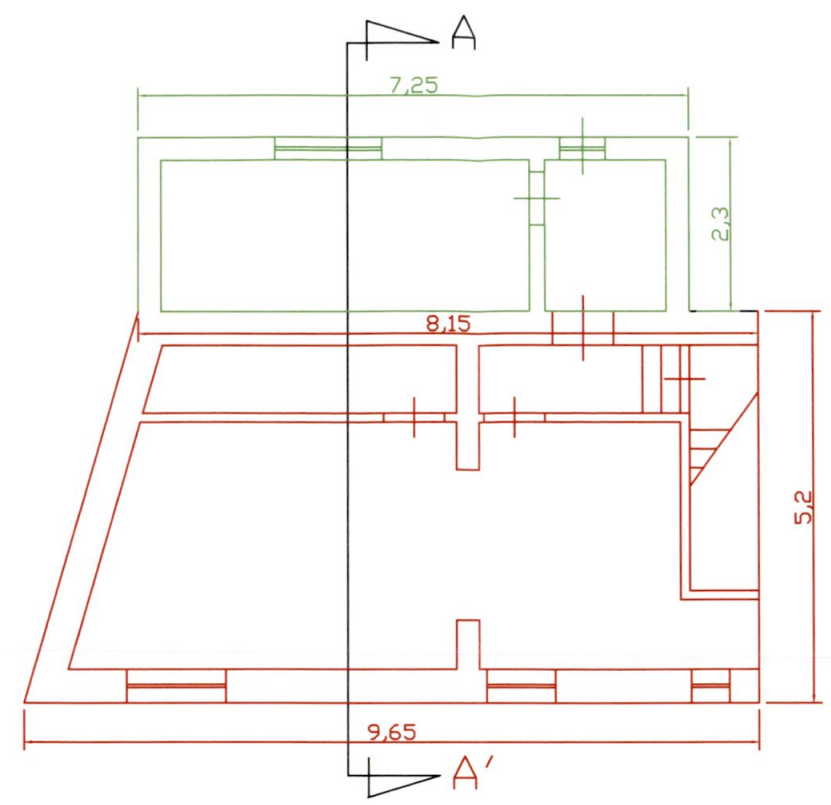


1:1500

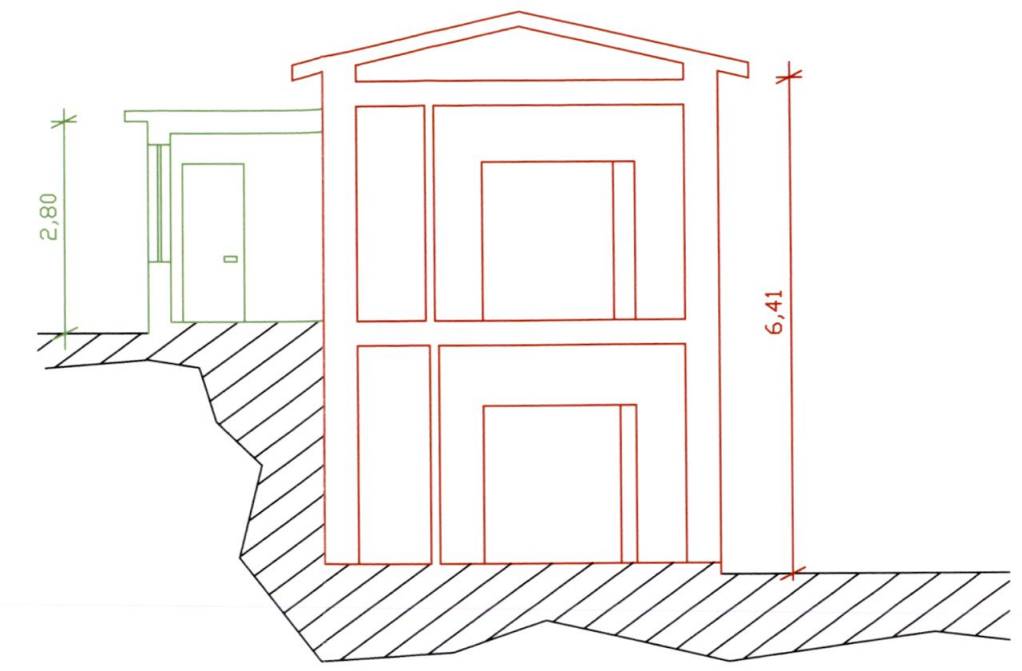
# CALCOLO SUPERFICI E VOLUMI



PIANO TERRA



PIANO PRIMO



SEZIONE A - A'

## CALCOLO VOLUMI

$$\text{PIANO TERRA} + \text{PIANO PRIMO} = [(9,65 + 8,15) \times 1/2] \times 5,20 \times h \ 6,41 = \dots \text{MC} \ 296,65$$

$$\text{PIANO PRIMO} = (7,25 \times 2,30) \times h \ 2,80 = \dots \text{MC} \ 46,70$$


---

TOTALE      MC    343,35

## CALCOLO VOLUMI (PER LE OPERE EDILI STRUTTURALI)


PIANO TERRA = MONOLOCALE. . . . . MQ    26,40

PIANO PRIMO = MONOLOCALE. . . . . MQ    26,60

---

TOTALE      MQ    53,00



  
GEOM. ROBERTO SIRONI